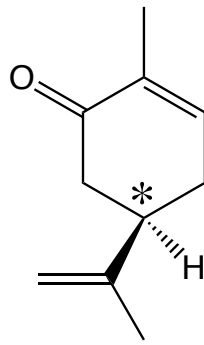
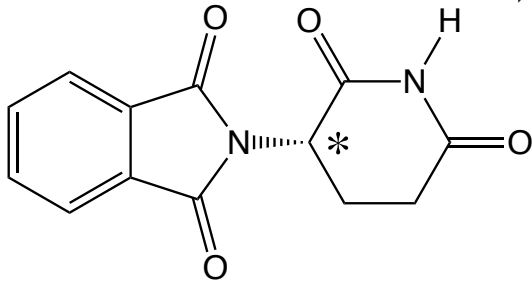
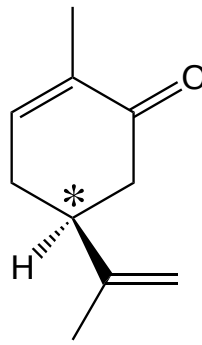


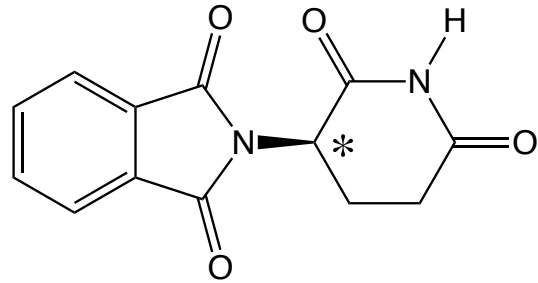
*R*-Carvone  
Spearmint



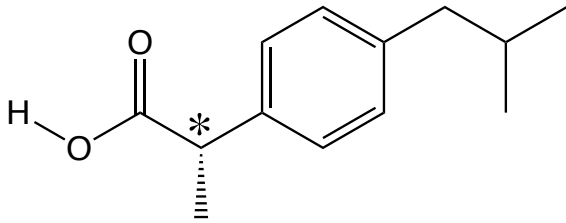
*S*-Carvone  
Major component  
of caraway seeds



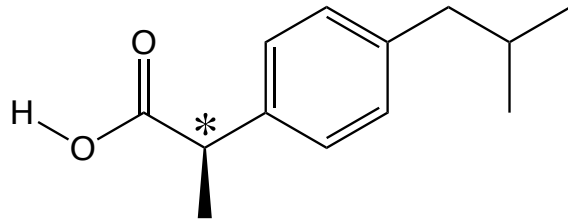
*S*-Thalidomide (Relieves morning sickness)



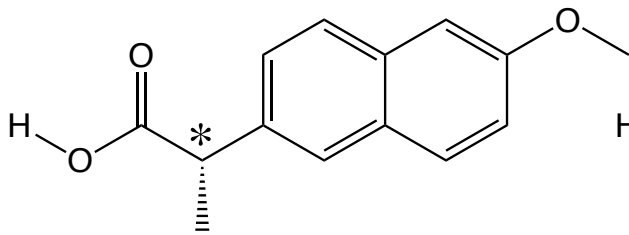
*R*-Thalidomide (Causes birth defects)



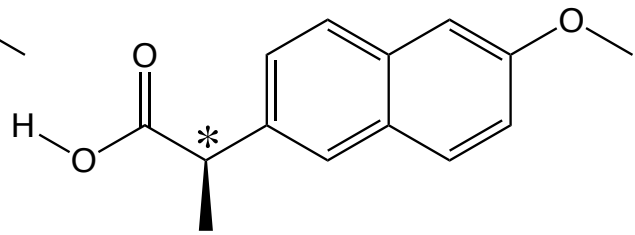
*S*-Ibuprofen (Advil, Motrin)



*R*-Ibuprofen (Inactive and relatively harmless)



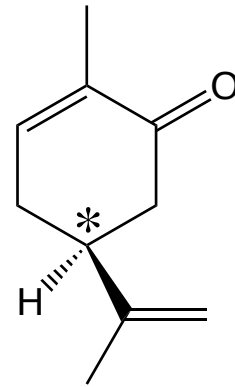
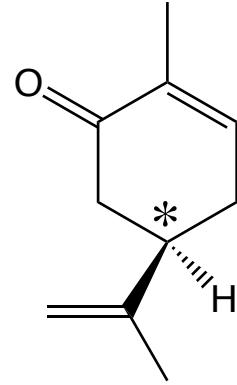
*S*-Naproxen (Aleve)



*R*-Naproxen (liver toxin)

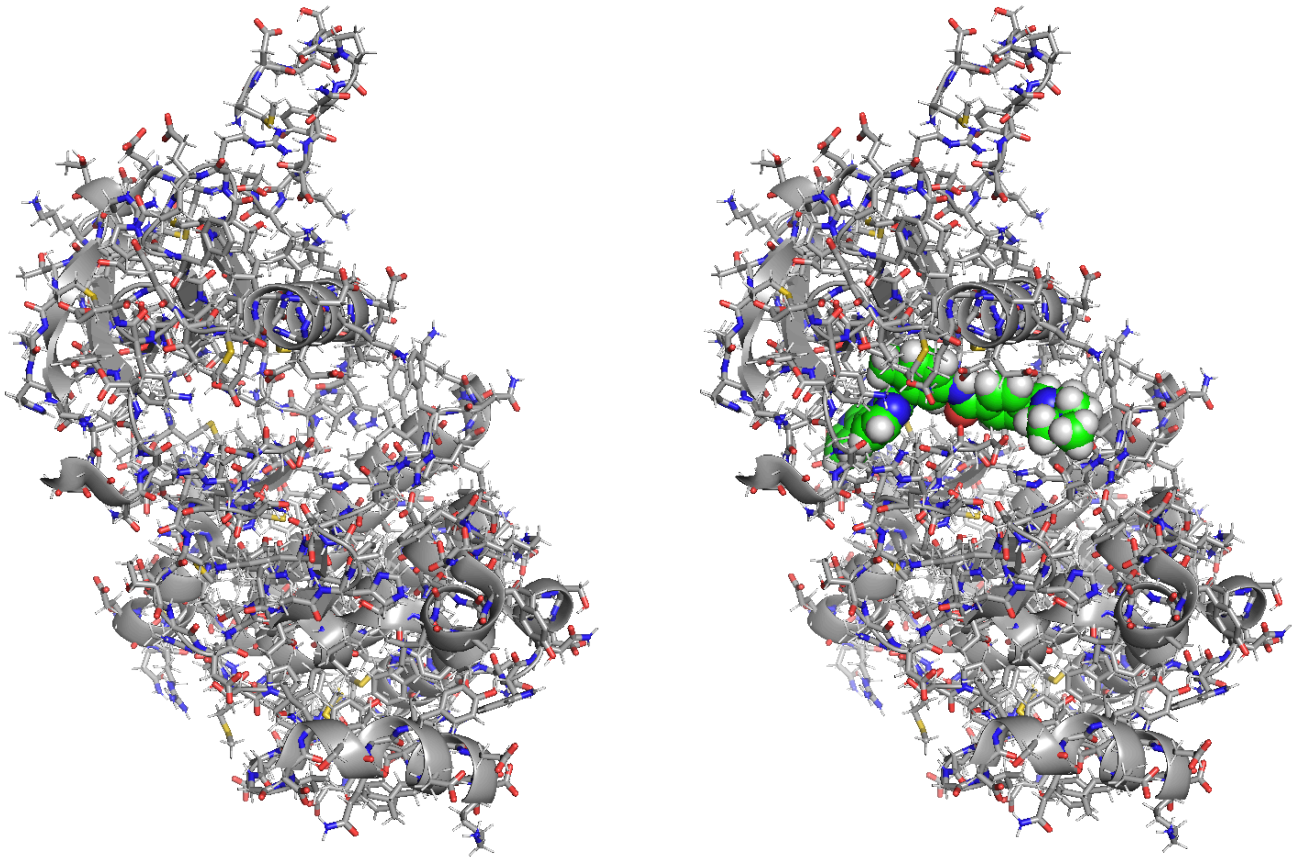


*R*-Carvone  
Spearmint



*S*-Carvone  
Major component  
of caraway seeds





The drug Gleevec (green) bound to its target protein, the ABL kinase.

